



# BACK TO JC SCHOOLS

## 2021-2022 SCHOOL RE-ENTRY PLAN

RELEASED: 8/16/21

UPDATED: 12/16/21



# LETTER FROM THE SUPERINTENDENT

Hello JC Schools Families,

The Jefferson City School District has been closely monitoring any positive cases of COVID-19 that occur within the school environment since the beginning of the 2021-2022 school year.



Despite our initial concerns regarding how the Delta variant may impact the school environment, we are seeing a comparable number of positive cases and a significantly lower number of close contacts compared to last year. We also have not seen any instances of close contacts from within the school environment becoming positive.



District leaders meet regularly with representatives from the Cole County Health Department and other school leaders from across Cole County to stay informed about community level data. The health department has shared that case numbers and hospitalizations have been steadily trending downward for our community, and with their support we are able to lift some mitigation protocols schools have in place.

Effective Friday, October 1st, masks will no longer be required within the school setting for students and staff in instances when social distancing cannot be maintained. *For more information on changes to our mask guidance please see page 10 of the plan.*

Also effective Friday, October 1st, students and staff members who are identified as a close contact of a positive case within the school environment will no longer be excluded from the school environment in most instances. *For more information on changes to protocols excluding students and staff from the school environment, please see page 17 of the plan.*

With these changes, the district will now be activating a COVID-19 rubric to constantly monitor the number of positive cases occurring within the school environment. This will allow us to watch closely for any emerging trends and make real-time changes to mitigation protocols. *For more information on the district's rubric for changing the status and accompanying protocols based on the number of positive cases within the school environment please see page 12 of the plan.*

The district is fully prepared to make necessary changes to our mitigation protocols if the data warrants doing so. We will be continually assessing and evaluating the effectiveness of these changes, and if we see any alarming changes to the number of cases within the school environment then we will move back to tighter protocols.

Thank you for your continued commitment to our COVID reentry protocols and your support to keep our schools open and our staff and students safe.

Superintendent Dr. Larry Linthacum  
**#WeAreJCSchools #JCStrongerTogether**

**#WeareJCSchools**  
**#JC Stronger Together**



**PAGE 1**

# KEY PRIORITIES

The Jefferson City School District continues our work to minimize the risk of exposure to COVID-19 for students and staff. Our re-entry plans are designed to limit the exposure to any positive COVID-19 cases that do enter the school environment.

The following key priorities have been proven to support the desire to provide an in-seat education model, by ensuring a safe learning environment for students and staff.

Our COVID-19 re-entry plan is built around the following foundational priorities which allow us to safely keep schools open:

- ① Increased sanitation efforts
- ② Social distancing
- ③ Staff + Student screening measures
- ④ Personal protective equipment
- ⑤ Limited visitor access to buildings
- ⑥ Virtual education options
- ⑦ Procedures for COVID-19 infections



# INCREASED SANITATION EFFORTS

- JC Schools custodial team members will undergo a thorough disinfectant & sanitation training including discussion of proper product use by a chemical engineer and a review of CDC and State of Missouri health department cleaning expectations for during school and after hours.
- During school hours, custodians will thoroughly cover high touch surfaces throughout the building on an ongoing rotation throughout the day, including bathrooms, water bottle fill stations, doorknobs, entrance/exit handles, handrails, walls, etc.
- Cleaning materials and hand sanitizers will be in every classroom. Staff and students will be expected to support cleaning and disinfecting of classroom surfaces and supplies as needed, particularly when students change classrooms.
- Handwashing stations with soap and/or hand sanitizer will be available in classrooms, commonly used areas, and at the entrances and exits of all buildings.
- 504 and IEP teams will determine and implement appropriate mitigation measures and any additional accommodations/modifications needed for students with disabilities.
- Infection prevention, specifically respiratory etiquette, is addressed through signage and classroom instruction.
- Students and staff will have scheduled times throughout the day to wash/sanitize hands and supplies.
- Drinking fountains will be turned off, but refillable water bottle stations can be used for individual drinking containers such as cups or bottles as outlined by each school building.
- First Student bus drivers will undergo sanitation training, and all school buses will be thoroughly sanitized before and after each route.

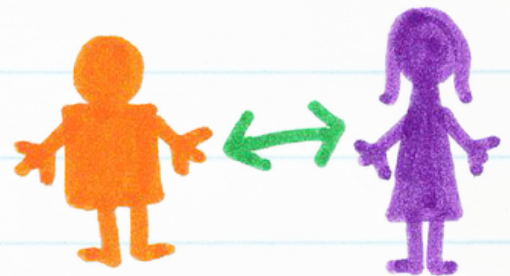


# SOCIAL DISTANCING

What's different for the new school year?

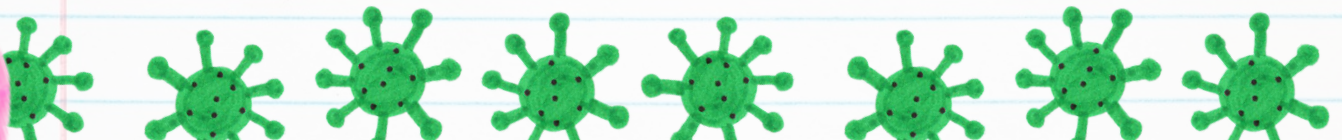
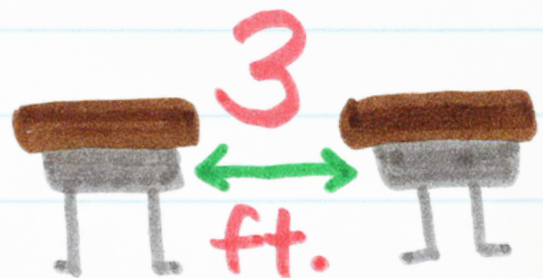
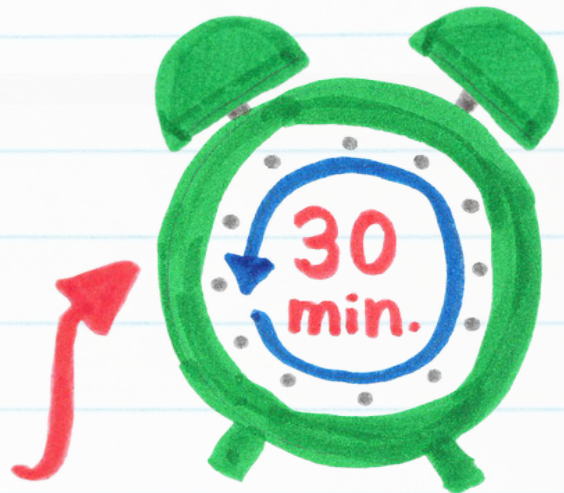
- **Modifications within the school day will be made as needed:**
  - Students will begin moving out of their primary classroom for music, art, library and PE. They will remain in their cohort groups to do so. Seating charts will be utilized and equipment will be sanitized between classes.
- **Modifications to meals will be made as needed:**
  - Some schools will begin allowing students to eat meals in the cafeteria again, within their small groups and while maintaining appropriate social distance to minimize exposure. Seating charts will be utilized to ensure students sit near the same students as in the classroom or homeroom.
- **Field trips are allowed at all grade levels.** If students ride the bus, they must sit next to the same students on the bus as they do in the classroom. If multiple classes are on the bus at the same time, the different classes must be separated by two rows of seats and not allowed to mix. While on the bus, masks will be required per federal mandate for public transportation.

- JC Schools will strive to create an environment that supports health guidelines without interrupting the education of our students.
- The goal is to limit exposure to as few other students and staff members as possible. Staff and students must do their very best to maintain as much distance as possible from others within school buildings.



# SOCIAL DISTANCING

- Parents should discuss the importance of social distancing with their students prior to the start of school. It will be difficult to ensure students maintain distance, but it is necessary for staff and students to understand the importance of doing so to help prevent exposure.
- Assigned seats will be utilized within classrooms, cafeteria, when occupying common areas, and for riding the bus. This will assist with contact tracing efforts if needed.
- Students will go immediately to designated classrooms upon arriving at school and will not congregate in hallways or common areas.
- In order to prevent students from congregating in hallways or common areas, buildings will only open 30 minutes before start times to ensure students can be supervised in individual classrooms as needed. Special arrangements for access into buildings outside of regular school hours (such as tutoring or extra/co-curricular activities) will be arranged by staff members and supervised accordingly.
- Desks in classrooms will be spaced as far apart as possible to allow for three feet of social distancing.



# SOCIAL DISTANCING



- Modifications to bus loading and unloading procedures will be made, hand sanitizer will be available to students for boarding and unloading from the bus, and students will be assigned seats to limit exposure.
- Parents who can transport their students to/from school are encouraged to do so to help minimize the number of students riding the bus and allow for minimized contact.
- In-school gatherings such as assemblies, rallies, school parties, dances etc. may be held with as much social distancing as possible and with students remaining within limited small groups. If social distance cannot be maintained students and staff will be encouraged to wear masks. School officials will continually assess the current state of COVID-19 community spread and evaluate whether these gatherings should continue as scheduled, be cancelled, or be modified for health and safety reasons.
- Additional details and guidelines regarding extra/co-curricular activities and competition will be released directly by the Activities Department.
- Academics are considered a non-voluntary component of a student's education while co-curricular activity participation is voluntary. This approach will drive our planning and preparation for extra/co-curricular guidance when released.



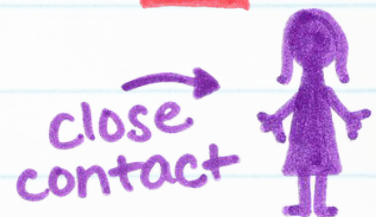
GO CAVS!  
GO JAYS!



# SOCIAL DISTANCING

- Group work may be utilized with as much social distancing as possible. If social distance cannot be maintained students and staff are encouraged to wear masks.
- CDC guidelines regarding contact tracing define a close contact within the school environment as any individual less than three to six feet of an infected person for a total of 15 minutes or more. Direct contact, such as handshaking, hugging, sharing drinks, etc., from one person to another removes the 15-minute close contact requirement and could result in an individual being identified as a close contact — even if the time limit has not been reached.
- During recess classes must stay in their assigned cohorts and not be allowed to mix.
- District travel will be approved for student activities out of town, out of state, and overnight. Travel destinations classified as a hotspot will be off limits for district-related events. Activities Directors and Coaches will work with the JC Schools Director of Health Services to determine the level of risk of a destination before traveling.
- Outdoor activities, such as athletic games, will continue to have no restrictions on masks or attendance. Depending on community spread of COVID-19, these events will be evaluated, and enforcement of mask wearing and/or attendance limitations could be modified as seen fit by the district, particularly for indoor activities.
- Students in need of specialized instruction in small groups, such as for math, reading, or special education, will come together to receive those services despite being in different cohorts. Masks are encouraged if social distance cannot be maintained and does not decrease the educational experience of the students. The goal of mask wearing is to prevent cross contamination and to help minimize close contacts from multiple classrooms in the event that a student or staff member participating in specialized instruction is a positive case.

Let's do the +  
MATH! x %





# STAFF & STUDENT SCREENING MEASURES

What's different for the new school year?

- Schools will no longer monitor thermal cameras at building entrances or scan temperatures in car lines. However, the cameras will stay in place, and building staff will still be notified if a temperature above 100.4 is detected.

- Students and adults who have come into close contact with someone who tests positive for COVID-19 should closely monitor for any COVID-19 symptoms and should follow all instructions given by the local health department related to contact tracing or guidelines as outlined by the school district.

If your kid is sick in your neighborhood, who ya gonna call? the school secretary!

- When students are kept home due to illness, the school attendance secretary will ask additional screening & entry questions regarding symptoms to confirm whether COVID-19 is a factor.
- Perfect attendance will not be incentivized by buildings as our preference is for anyone who is sick to stay home. Learning opportunities will be provided for all students who stay home due to illness.
- Where appropriate and if needed, handheld FDA approved infrared temperature readers will also be used at buildings, at additional entrances, by parent educators before meeting with families, for activities purposes, etc.



# STAFF & STUDENT SCREENING MEASURES

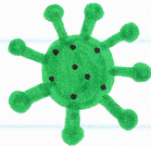
Does your student have **ANY** of these symptoms?



runny nose or congestion



shortness of breath or difficulty breathing



close contact to COVID-19 in last 10 days



loss of taste or smell



nausea, vomiting, or diarrhea



sore throat



muscle aches



fever or chills



headache



cough

Please keep your student at home...

YES!



and call your school secretary!

- Students and staff who experience any of the symptoms related to COVID-19 **should not come to school** (symptoms include: fever or chills; cough; headache; muscle aches; nausea, vomiting or diarrhea; new loss of taste or smell; new runny nose or congestion; shortness of breath or difficulty breathing; sore throat; close contact with a person with COVID-19 in the last 10 days).
- Students and staff who are sent home with a temperature must be fever free for 24 hours without the use of fever reducing medications (such as Tylenol, Acetaminophen, Motrin, Ibuprofen etc.) and may return to school if accompanied by a doctor's note with a diagnosis not related to a respiratory illness, influenza or COVID-19, (such as pink eye, strep throat, ear infection, etc.). *Students and staff must be fever free for 72 hours without the use of fever reducing medications (such as Tylenol, Acetaminophen, Motrin, Ibuprofen etc.) if not accompanied by a doctor's note for a diagnosis.*



# PERSONAL PROTECTIVE EQUIPMENT



- **Masks will be encouraged indoors in any instances where social distancing cannot be maintained. Social distance is defined as a minimum of three feet within the school environment.**
- JC Schools will utilize a rubric (see page 12) to determine the percentage of active cases within the school environment out of the total school community (students and staff combined). The percentage will determine whether individual classrooms, grades, school buildings, school categories (elementary/middle/high) or the entire district will move to a different level of mitigation protocols.
- This approach is supported by the Cole County Health Department and aligns with the other schools in Cole County.
- No one will be prohibited from wearing a mask.
- It is possible that, if local conditions warrant it, JC schools will consider tightening or loosening mitigation protocols related to face coverings. These strategies may be implemented for individual school buildings, or districtwide, depending upon individual school or community conditions
- **Masks will be required on the school bus for both students and drivers per a federal order issued by the CDC that requires masks on all school buses and other forms of public transportation.**



# PERSONAL PROTECTIVE EQUIPMENT

- The use of masks will be factored into any contact tracing investigation:
  - Close contacts of a positive case who are not vaccinated and not wearing a mask may be excluded from the school environment;
  - Close contacts of a positive case who are not vaccinated and are wearing a mask may be excluded from the school environment depending upon the situation and the severity of symptoms from the positive case;
  - Close contacts of a positive case who are vaccinated, are not wearing a mask, and are not symptomatic will not be excluded from the school environment;
  - Close contacts of a positive case who are vaccinated, are not wearing a mask, and are symptomatic will be excluded from the school environment.
- 
- The use of masks or face coverings will not be prohibited in any instances throughout the school day where a student or staff member chooses to wear them. Due to possible medical related concerns or personal preference, JC Schools fully understands some staff and students may still choose to wear masks throughout the school day.
- Existing student and staff dress codes will apply to face coverings that are worn.
- The Jefferson City School District does not currently mandate COVID vaccination for those who are eligible. Vaccinations are available in the community for those who meet eligibility requirements.
- JC Schools will not track who is vaccinated unless mandated to do so by state requirements. However, we will utilize the state's vaccination database to determine whether individuals have been vaccinated for contact tracing investigations.



# JC SCHOOLS RUBRIC: COVID-19 Cases Within the School Environment

- Positive cases within the school environment will be monitored constantly throughout the school day to watch for trends and determine whether any immediate changes are needed to mitigation protocols.
- Positive cases within the school environment will be assessed weekly, at a minimum, to evaluate the percentage of positive cases among students and staff based on the total population of the school.
- Individual classrooms, grades, school buildings, school categories (elementary/middle/high) or the entire district can be moved into corresponding levels (green/yellow/red) at any given time based on the number of active cases within the school environment, or based on community trends.
- If a school community is moved from a lower to higher level (from green to yellow or yellow to red), the corresponding mitigation protocols will remain in place for a minimum of 10 calendar days to allow active cases who have been excluded from the school environment.
- If after 10 calendar days the percentage of active positive cases within the school environment drops back into the range for a lower level, the school community will move back to the corresponding mitigation protocols.
- The district will also closely monitor county level data including, the number of positive tests collected, the percentage rate of residents testing positive, and the positivity rate per 100,000 people.
- Staff and parents will be notified of any changes to levels for their school community.



# JC SCHOOLS RUBRIC: COVID-19 Cases Within the School Environment

## GREEN

## YELLOW

## RED

**RANGE:** Active positive cases within the school environment equal to **0%-2% of total school population.**

**MITIGATION PROTOCOLS:**

- Key pillars of COVID Reentry Plan are in place including social distancing, washing hands, staying home when sick.
- Masks are encouraged indoors when social distance of three feet cannot be maintained.\*
- Field trips are permitted.
- School gatherings and assemblies are permitted if social distance can be maintained. Masks are encouraged if not.
- JC Schools allow unvaccinated individuals identified as close contacts within the school environment to stay in the school environment if they show no symptoms AND if school district and community data supports doing so safely. Otherwise, close contacts will be excluded from the school environment.
- Visitors supporting educational purposes are permitted but must always check-in, wear a mask while in buildings regardless of vaccination status, and follow all COVID protocols.

**RANGE:** Active positive cases within the school environment equal to **2.1%-5% of total school population.**

**MITIGATION PROTOCOLS:**

- Key pillars of COVID Reentry Plan are in place including social distancing, washing hands, staying home when sick.
- Masks are required indoors when social distance of three feet cannot be maintained.
- Field trips are permitted upon approval to areas of limited/low transmission.
- School gatherings and assemblies are permitted if social distance can be maintained. Masks are required if not.
- Unvaccinated close contacts\* with no symptoms will be excluded from the school environment.
- Visitors providing essential and educational services are permitted but must always check-in, wear a mask while in buildings regardless of vaccination status, and follow all COVID protocols.

**RANGE:** Active positive cases within the school environment **equal to or greater than 5.1% of total school population.**

**MITIGATION PROTOCOLS:**

- Key pillars of COVID Reentry Plan are in place including social distancing, washing hands, staying home when sick.
- Masks are required indoors at all times regardless of social distance.
- Field trips are not permitted.
- School gatherings and assemblies are restricted unless approved and determined to meet social distance and other applicable mitigation strategies.
- Unvaccinated close contacts\* with no symptoms will be excluded from the school environment.
- Visitors providing essential and educational services are permitted but must always check-in, wear a mask while in buildings regardless of vaccination status, and follow all COVID protocols.
- Schools may transition to distance learning due to the number of positive cases within the school environment, number of staff or students excluded from the school environment, staff shortages, or other conditions detrimental to in-seat learning.

\*JC Schools may consider tightening or lifting mask or other guidelines depending on school, district and community data.

# LIMITED VISITOR ACCESS TO BUILDINGS

- In order to minimize the exposure of all students and staff to others outside of their assigned small groups, only visitors who are approved by the building administrator and who serve an educational component will be permitted into school buildings during the school day.



visitors



MASK UP!

- Any visitors who do enter the building will be required to enter through the main entrance, and will be required to wear a mask while in the building and will be tracked in a visitor log to include symptom screening questions, date and time of visit, where in the building they travel to, and which, if any, students or staff they have contact with.

- These restrictions will apply during the school day but may differ somewhat for evening activities, which are optional to attend.



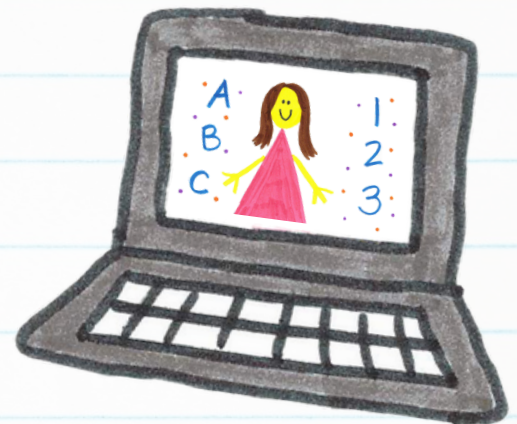
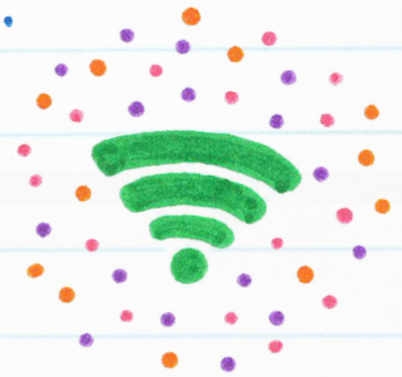
# VIRTUAL EDUCATION

Go to [jcschools.us](https://jcschools.us) to learn all about

# LAUNCH

and virtual education!

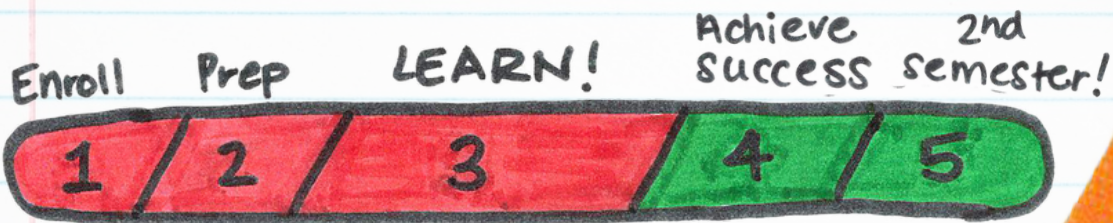
- The district's preferred provider for virtual education is Launch, an online education platform which was used by JC Schools in 2020-2021.
- Launch has a rigorous K-12 curriculum that is aligned with the Missouri Learning Standards, is currently used by over 270 districts across the State of Missouri, and is staffed by certified educators who live and work in partner districts.
- Families considering virtual learning should complete a virtual education application. An application for the second semester will be available sometime in December.
- Once you have completed the virtual enrollment application form, school staff will review your application and contact you for further information.
- Students approved for virtual education will have a 10-day window to transfer back to in-seat instruction without penalty. Otherwise, they must remain in the virtual program for the duration of the semester for which they were approved.
- Students approved for virtual education will be issued a technology device by Launch or JC Schools.
- Students approved for virtual education can participate in extracurricular activities as long as they meet MSHSAA requirements.





# VIRTUAL EDUCATION

## virtual student success TRACKER



- Upon approval for virtual education, additional scheduling logistics will be arranged directly with the student's school staff.
- Grades from Launch courses will be transferred to JC Schools and will factor into the student's GPA.
- Students approved for virtual education for the first semester of the 2021-2022 school year can return to in-seat enrollment for the second semester if so desired, or may remain virtual for the duration of the school year.
- If a student is not successful with Launch, they may not be approved for future semesters.
- IEP teams will create and update Distance Learning Plans for all students who have active IEPs. These plans will be utilized in the event of emergency school closures as well as any extended student absence. Distance learning plans will incorporate parental and staff input in order to identify the individual priorities for a student during a potential closure as well as develop a communication plan between home and school. In addition, the IEP team will determine services, accommodations, modifications, and progress monitoring methods that will be utilized during any short or long-term closure.



# PROCEDURES FOR COVID-19 INFECTION RESPONSE

- Students or staff who display symptoms of COVID-19 while at school may be evaluated and moved to a designated area within the school building to minimize contact with others until they go home.
- If JC Schools receives official notification of a student or staff member testing positive for COVID-19, a contact tracing investigation will be conducted by the district to determine who the individual may have had close contact with while symptomatic or within 48 hours of becoming symptomatic.
- Effective October 1st, 2021, students and staff members who are identified as a close contact of a positive case within the school environment will no longer be excluded from the school environment in most instances.
- Staff members and parents of students who are identified as close contacts will still be notified so they can stay alert to any symptoms that may develop.
- Depending upon the severity of symptoms experienced by the positive case, the length of exposure, and the proximity to the positive case, there may be instances when students or staff are excluded from the school environment.
- The primary approach will be to keep healthy students and staff members in school, but anyone experiencing symptoms of COVID-19 should stay home.
- Students and staff who are identified as a personal contact of a positive case outside of the school environment will still be excluded from the school environment or meet designated guidelines to return to school.
- Students and staff may be contacted to assist with contact tracing efforts, review assigned seating charts, and to determine which individuals the positive case had contact with while contagious.
- If proof of vaccination or proof of immunity cannot be obtained during a contact tracing investigation, the close contact of a positive case will be excluded from the school environment if deemed necessary.
- If considered a close contact and excluded from the school environment following a contact tracing investigation, staff and students will be given options on when to return to work or school to help them return safely.

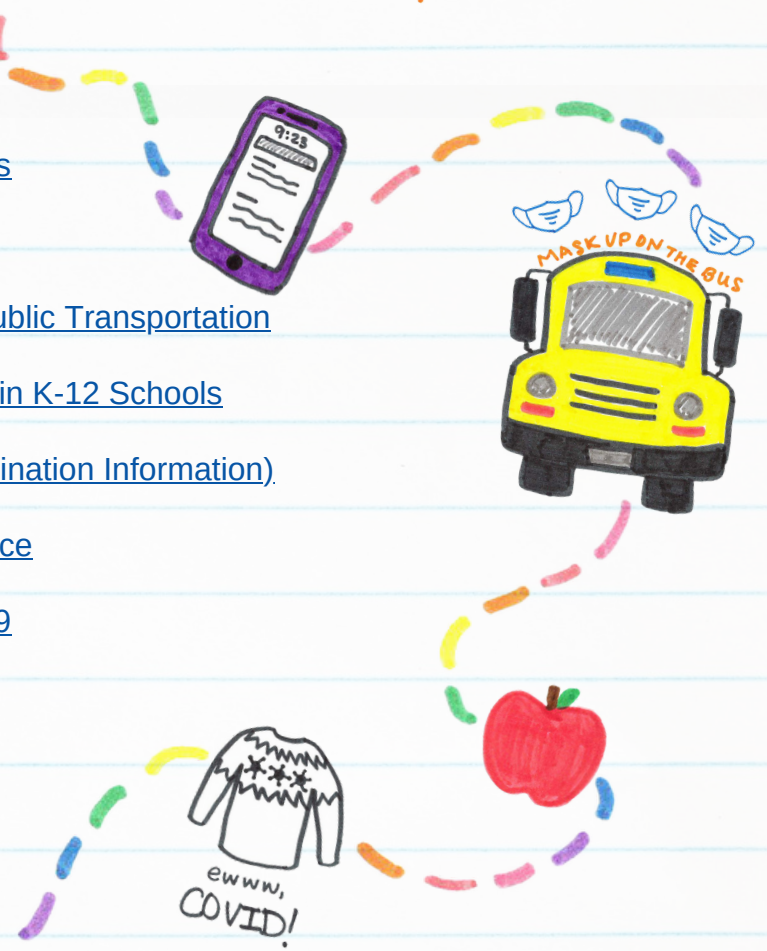


# ADDITIONAL RESOURCES



- [CDC: Coronavirus Symptoms](#)
- [CDC: When and How to Wash Your Hands](#)
- [CDC: How to Wear Cloth Face Coverings](#)
- [CDC: Requirements for Face Masks on Public Transportation](#)
- [CDC: Guidance for COVID-19 Prevention in K-12 Schools](#)
- [State of Missouri: MO Stops COVID \(Vaccination Information\)](#)
- [DHSS & DESE School Reopening Guidance](#)
- [Cole County Health Department COVID-19](#)
- [Callaway County COVID-19 Website](#)

*The Jefferson City School District's 2021-2022 COVID-19 Re-entry Plan is subject to change if local conditions warrant a tightening or loosening of any of the proposed guidelines.*



The More You Know 

